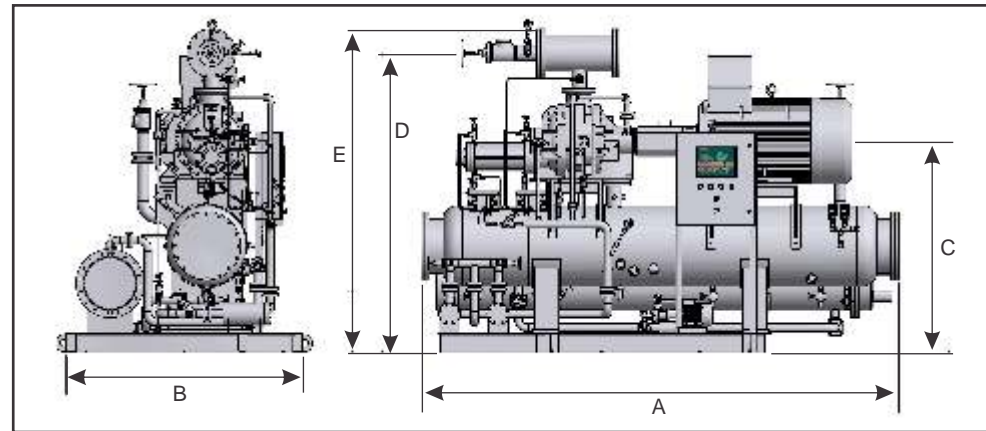


Specifications & Dimensions



DIMENSIONS(mm) & Weight (Kgs.)						
MODEL	A	B	C	D	E	WT.
MBM-255	3100	1300	1467	2060	2245	2208
MBM-305	3100	1300	1467	2060	2245	2219
MBM-384	3600	1400	1580	2175	2360	2350
MBM-517	3600	1400	1610	2235	2420	2716
MBM-689	3600	1400	1610	2235	2420	2850
MBM-890	3600	1500	1844	2560	2770	4900
MBM-1120	3600	1500	1844	2560	2770	5100
MBM-1384	4142	1890	1830	2535	2790	6350
MBM-1600	4142	2218	2258	3068	3328	6700
MBM-2000	4142	2218	2258	3068	3328	6890

Models	High Stage (50 Hz.)				High Stage (60 Hz.)				Low Stage (Booster) 50 Hz				Low Stage (Booster) 60 Hz						
	@ -5 deg C SST & 40 Deg C SDT								@ -40 deg C SST & -5 Deg C SDT										
	CMH	Kw	BKw	BkW/TR	Models	CMH	Kw	BKw	BkW/TR	Models	CMH	Kw	BKw	BkW/TR	Models	CMH	Kw	BKw	BkW/TR
MBM 255	433	336.2	87.4	0.91	MBM 255	521	404.5	105.2	0.91	MBM 255B	433	86.0	23.1	0.94	MBM 255B	433	103.5	27.8	0.94
MBM 255E	433	373.2	90.0	0.86	MBM 255E	521	449.1	109.6	0.86										
MBM 305	518	395.5	102.9	0.91	MBM 305	624	475.9	123.8	0.91	MBM 305B	518	101.4	27.2	0.94	MBM 305B	518	122.1	32.7	0.94
MBM 305E	518	439.0	107.1	0.86	MBM 305E	624	528.3	129.0	0.86										
MBM 384	652	497.7	129.5	0.91	MBM 384	785	599.1	155.9	0.91	MBM 384B	652	127.7	34.3	0.94	MBM 384B	652	153.7	41.3	0.94
MBM 384E	652	552.4	134.9	0.86	MBM 384E	785	664.9	162.3	0.86										
MBM 517	878	666.2	165.7	0.87	MBM 517	1057	802.1	199.5	0.87	MBM 517B	878	171.3	43.6	0.89	MBM 517B	878	206.7	52.5	0.89
MBM 517E	878	739.5	172.6	0.82	MBM 517E	1057	889.9	207.7	0.82										
MBM 689	1171	888.7	221.0	0.87	MBM 689	1409	1069.4	266.0	0.87	MBM 689B	1171	228.5	58.1	0.89	MBM 689B	1171	274.8	70.0	0.89
MBM 689E	1171	985.9	228.6	0.82	MBM 689E	1409	1186.6	276.9	0.82										
MBM 890	1512	1200.0	288.8	0.85	MBM 890	1820	1444.3	347.6	0.85	MBM 890B	1512	304.6	75.3	0.87	MBM 890B	1512	366.7	90.7	0.87
MBM 890E	1512	1331.6	300.8	0.79	MBM 890E	1820	1602.7	362.0	0.79										
MBM 1120	1903	1511.0	363.4	0.85	MBM 1120	2290	1818.7	437.8	0.85	MBM 1120B	1903	383.6	94.9	0.87	MBM 1120B	1903	461.9	114.2	0.87
MBM 1120E	1903	1677.0	378.8	0.79	MBM 1120E	2290	2018.3	455.9	0.79										
MBM 1384	2351	1867.6	449.5	0.85	MBM 1384	2830	2247.4	541.0	0.85	MBM 1384B	2351	474.3	117.3	0.87	MBM 1384B	2351	570.8	141.2	0.87
MBM 1384E	2351	2072.5	468.1	0.79	MBM 1384E	2830	2494.1	563.3	0.79										
MBM 1600	2718	2150.6	518.1	0.85	MBM 1600	3271	2588.0	623.4	0.85	MBM 1600B	2718	546.2	135.1	0.87	MBM 1600B	2718	657.4	162.5	0.87
MBM 1600E	2718	2328.3	539.0	0.81	MBM 1600E	3271	2801.8	648.7	0.81										
MBM 2000	3398	2708.2	652.4	0.85	MBM 2000	4089	3258.9	785.1	0.85	MBM 2000B	3398	687.7	170.1	0.87	MBM 2000B	3398	827.6	204.7	0.87
MBM 2000E	3398	2932.0	678.8	0.81	MBM 2000E	4089	3528.4	816.9	0.81										

NOTES : a) Allow 18 inch/45 cm on man way end of unit to pull coalescer element. b) Dimension and Performance Data given is for Ammonia Units only, for other refrigerants please contact Frick India Ltd. c) All Specifications are subject to change without notice.



FRICK INDIA LIMITED

809, "Surya Kiran", 19 K. G. Marg, New Delhi - 110 001. Ph : 23322381/84/91. Fax : 23322396
email : delhi@frick.co.in

Factory : 21.5 km, Main Mathura Road, Faridabad 121 003. Ph : 2275691-94, 2270546-47 Fax : 0129-2275695
email : fbd@frick.co.in



Branch Off.	Address	Phones	Fax	email
Ahmedabad	: 1010, The Titanium City Centre, Anandnagar Road, Satellite, Ahmedabad-15	26934410	26934410	gujarat@frickmail.com
Bangalore	: T-6, Swastik Manandi Arcade 401/2, Sheshadri Puram, Bangalore-560020.	22196021, 23469693	23469693	bng@frickmail.com
Chandigarh	: SCO-6, IIInd Floor, Silver City, Chd-Delhi Road, Zirakpur, Chandigarh-140603	9316136334		frick.chd@gmail.com
Chennai	: 243, Anna Salai, Post Box. No. 1077, Chennai - 600 006	28524010, 28524003	28524003	chennai@frickmail.com
Cochin	: 41/3518, Providence Road, Nr. Madhava Pharmacy Junction, Cochin 682 018.	2394173	2394173	cochin@frick.co.in
Jalandhar	: Opp Uday Nagar. Nakodar Road, Jalandhar, Punjab - 144001	6575760		jalandhar@frickmail.com
Kolkata	: Poonam Building, 5/2 Russel Street, Kolkata - 700 071.	22261179, 22267834	22266231	kolkata@frickmail.com
Patna	: 807, Jagat Trade centre, Frazer Road, Patna - 800001	2216520		patna@frickmail.com
Mumbai	: Ion House, Dr. E. Moses Road, Mumbai - 400 011.	24924687, 24925203	24935552	mumbai@frickmail.com
Secunderabad	: 608, VI Floor, Swapnalok, 92/93, S.D. Road, Secunderabad -500 003.	27813044, 27813897	27813897	hyd@frick.co.in
Vizag	: D No 3/18, 3- Floor, Eswar Homes, 1- Lane, Dwaraka Nagar, Vizag- 530016.	2553232		vizag@frickmail.com

ROTARY TWIN SCREW COMPRESSOR PACKAGES

MBM SERIES

Capacity Range :
433 CMH to 4089 CMH

MODELS :
MBM - 255/305/384
MBM - 517/689
MBM - 890/1120/1384
MBM - 1600/2000



REFRIGERANTS :

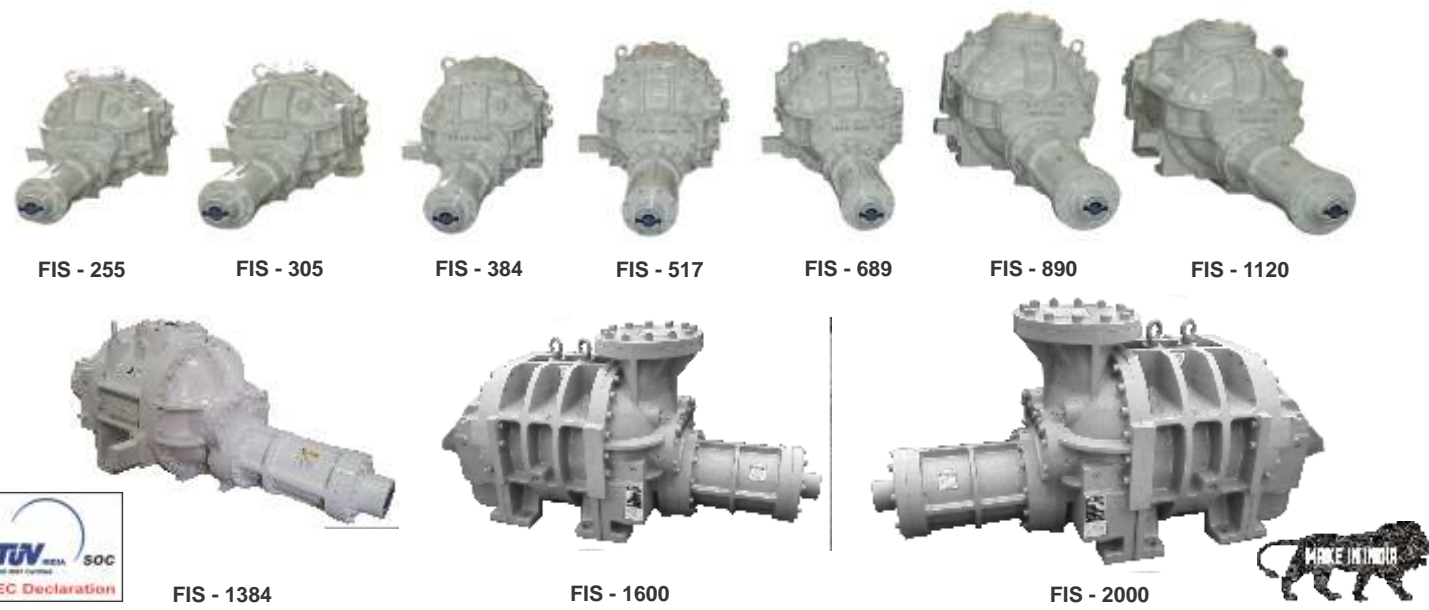
- R-717 ■ R-22 ■ R-32 ■ R-134a ■ R-290
- R-404A ■ R-507 ■ R-407c ■ R-600a ■ R-1270

FRICK INDIA LIMITED



High Efficiency Rotary Twin Screw Compressor Blocks

Some Installations



Frick India Limited, established in 1962 and pioneer in the field of Industrial Refrigeration and Air-conditioning equipment brings the third generation Twin Screw Compressor Blocks as well as Rotary Screw Compressor Packages, manufactured at their advanced and updated manufacturing facility at Faridabad.

Our Commitment to produce world class product to meet current and future demands of the Industry and our product development team at our R&D has developed high efficiency screw blocks to conserve energy and low operating costs.



The rotors are from low carbon steel forgings to the exacting tolerance of the latest "N" profile manufactured by renowned company of U.K., M/s Holroyd by using latest technology under the technical know-how from "City University, London". The four lobed male rotors is directly connected to the drivers. The six lobed female rotor is driven by the male rotor on a thin oil film.

These screw blocks can run for almost all gases like R-717, R-22, R-32, R-134a, R-290, R-404A, R-507, R-407c, R-600a, R-1270 etc. For other gas applications custom built packages can be offered.

APPLICATIONS:

- Fruits & Vegetables Industries
- Beverage Industries
- Breweries
- Chemical Industries
- Process Industries
- Sea Food Industries
- Dairy Industries
- Ice Cream Industries
- Cold Storage
- Pharmaceutical Industries
- Air-Conditioning
- Meat & Poultry Industries





Frick India Automation system monitor and control the production and delivery of products and services.

Highly accurate control of the compressor is maintained by Frick India's PLC based Control Panel which constantly monitors the system to maintain design condition and unit energy costs.



Advantages of Frick India Automation System :

- Improve the quality and precision
- Increase in productivity
- Cost reduction
- Reliable performance
- Maintain accurate temperature
- Control your power efficiency
- Read and capture data
- Run system at ideal condition
- Reduce plant breakdown
- More safety to your plant
- Avoid monotonous Work

Frick India Service Network



Our experienced team of highly skilled and specially trained engineers and technicians are available 24x7 on a dedicated support from our Factory to provide all type customer and technical support to our customers pan India.

Training & Skill Development

Apart from our regular after sales service, we regularly train the people through our comprehensive training program in our factory as well as our client's place.

Frick India Genuine Spare Parts

Frick India offers genuine spare parts for lifetime performance of the system.



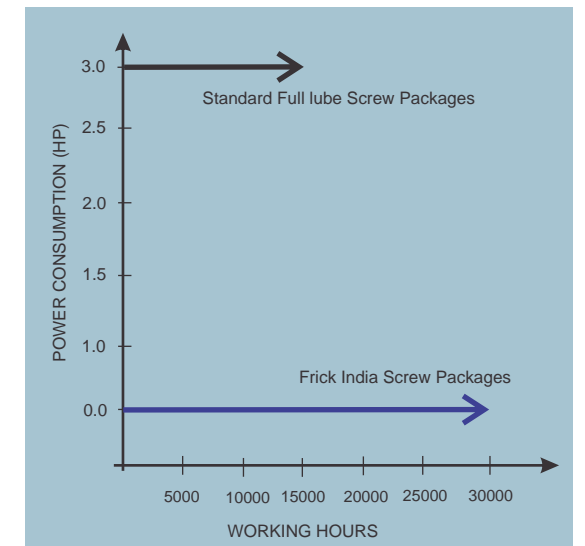
INTRODUCTION :

Frick India Rotary screw compressor units in Ten high efficiency model, range in capacity from 433CMH to 3928 CMH at 2950 RPM as well as 521 CMH to 4089 CMH at 3550 RPM. Standard units are designed for use on Ammonia, Halocarbon and Hydrocarbon refrigerants at pressure ratio upto 26:1.

Energy Saving Features

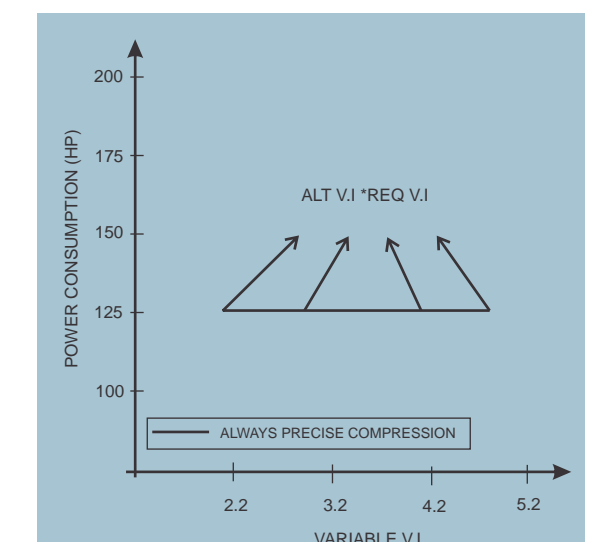
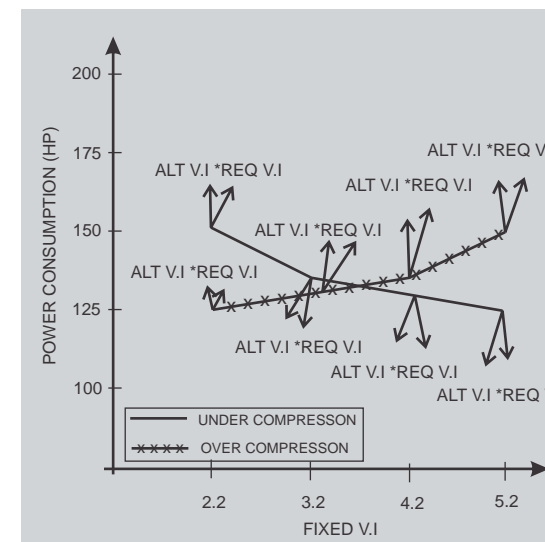
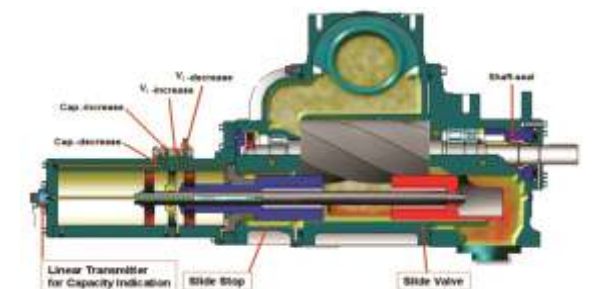
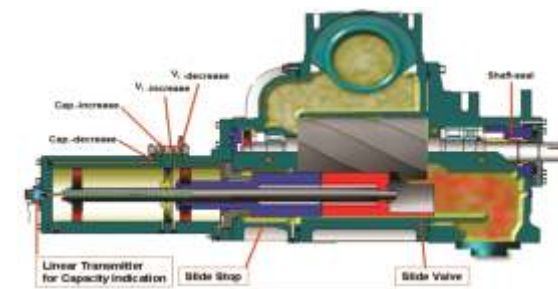
PUMPLESS TECHNOLOGY

- A standard Full lube Screw Compressor package requires full cycle pump which not only increase power consumption but may also require frequent repairs and replacements which may result compressor lubrication failure causing premature overhaul within 15,000 working hours.
- All high stage Frick Screw Compressor don't require oil pump due to choke start technology (by using multi functional compressor valve) and auto unload technology. This feature not only saves power but also reduces risk of frequent pump repair and ensures uninterrupted lubrication of compressor, giving life of at least 30,000 hours.



FULLY AUTOMATIC VARIABLE VOLUME RATIO CONTROL

- All Frick Screw Packages work under wide range of operating conditions with maximum power saving delivered by using Frick India variable Vi technology, which matched external and internal pressure ratios automatically infinitely controlled saving test recorded power (5-25 HP) i.e. (5-15%) of overall power consumption of package w.r.t. standard fixed Vi Screw packages.



FOUNDRY

Frick India is committed to manufacturing third generation highest quality compressors. The process starts with casting in our latest State-of-the-Art foundry in our Factory. All screw compressor casting are designed and tested to meet the requirements of ASHRAE 15-78 safety codes for 350 psig maximum discharge pressure. Castings are close grain, ASTM A 278 class 40 cast iron to ensure structural integrity.



Quality Checking of Machined Equipment by Spectro (NABL Accredited) & Trimos Machine for accuracy

MACHINING

We use state of the art CNC machining system to meet the highest possible accuracy in order to produce high efficiency compressors. We use state of the art horizontal machining centres to produce casing in order to achieve accuracy.



Each Housing is inspected on CMM for ensuring consistency in machining

COMPRESSOR ASSEMBLY

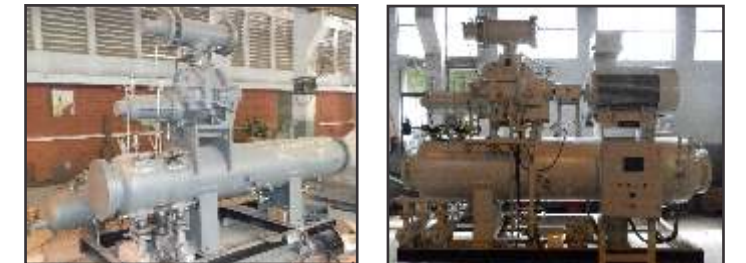
Assembly of High efficiency Screw Blocks has been performed by technical engineers at advanced and upgraded manufacturing facility at our factory. After assembly, Frick India offers complete capacity and efficiency testing for all models of Screw Blocks are conducted in-house itself with our test Rigs, installed as per ISO 917 standard.



IN HOUSE TEST RIGS : State-of-the-art Routine testing RIG, confirming to IS 10431 and performance test Rig confirm to ISO 917.

SCREW PACKAGES

Assembly of screw compressor is done by our skilled engineers at Factory. The oil separator is a horizontal, three-stage separation design with integral sump. Two 1000 watt heaters maintain oil temperature at 19.4 deg C minimum during compressor shutdown and are replaceable without shutting the compressor down. Coalescer filter elements are provided for final gas/oil separation of particles down to less than 1 micron.



The compact, vibration free Frick India rotary screw compressor packages are designed for all Industrial refrigeration and air-conditioning requirements.